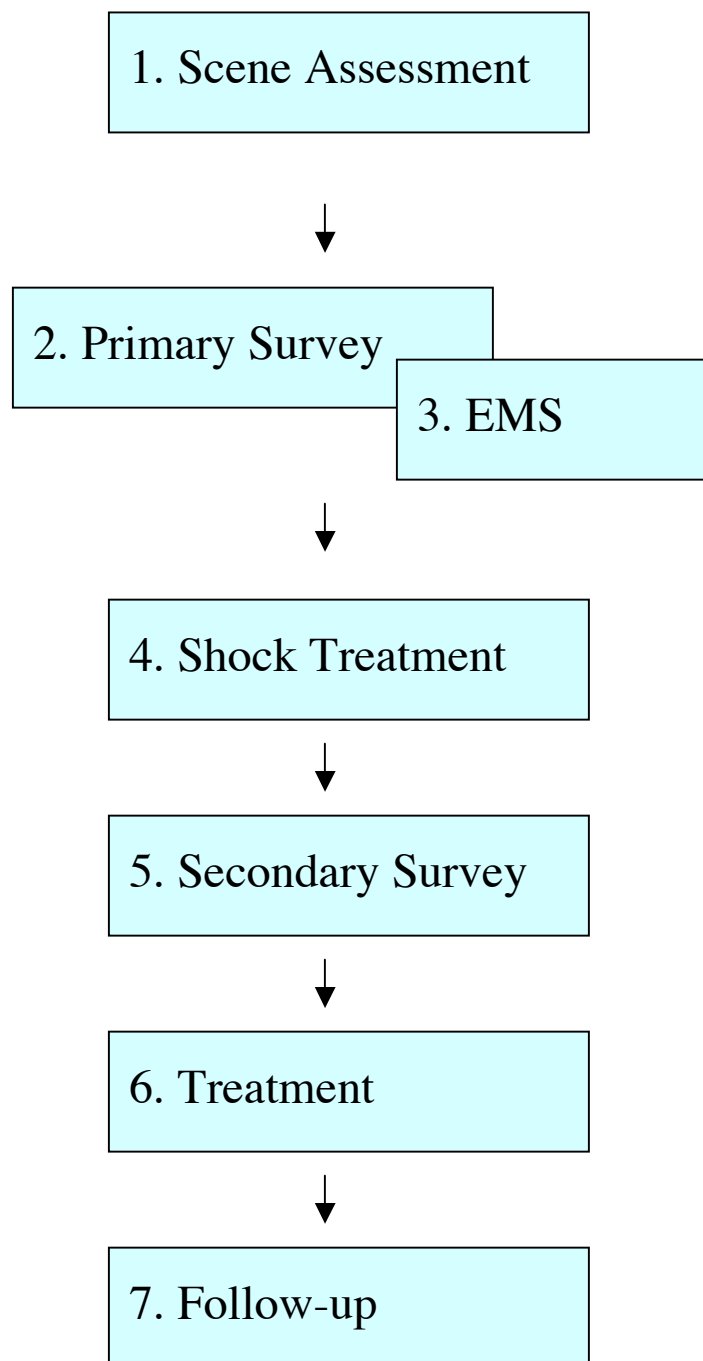


Priority Action Approach

(ALERT 75-77, CLSM, 6:2-4, 7:1-3)



1. Scene Assessment

Stop
Assess
Find Out
Exposure

2. Primary Survey

LOC
EMS/Back-up
d-Spine
Airway
Breathing
Circulation
Rapid Body Survey

Critical Intervention

All life-threatening problems are treated as you find them (ex. Rescue Breathing)

3. EMS

Police/Fire/Ambulance
Location
Condition of patient
Meeting place

4. Shock Treatment

Position Patient
Blanket
Oral Airway
Oxygen
Rest & Reassurance

5. Secondary Survey

Vitals
(Time, LOC PRES)
History
(CHAMMIP)
Head to Toe

6. Treatment

Life-threatening problems are treated as you find them. Other treatment (ex. Bandaging) is done at this time (**after** the secondary survey).

7. Follow-up

Complete first aid form
Find patient's belongings
Interact with paramedics